

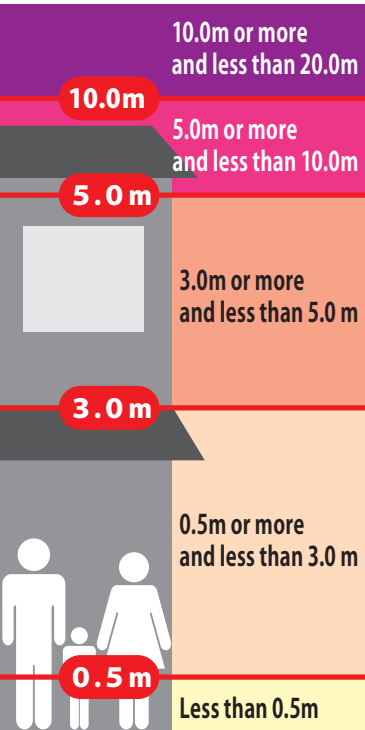
Matsumoto City Hazard Map

Published April 2024

49 Nagawa (Oidaira, Kanabara, Kurokawado, Yakatahara)

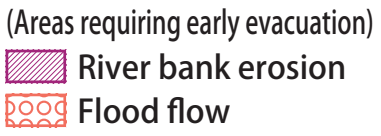
In the case of heavy rain that occurs about once in 1,000 years (maximum anticipated scale)

Flood inundation zone (Inundation depth)



Flooding areas such as collapsed houses (River bank erosion)

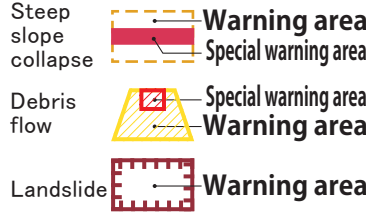
(Areas requiring early evacuation)



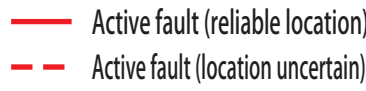
Setting of Important Flood Prevention Zones



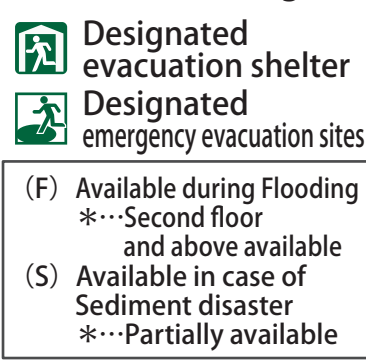
Sediment disaster warning area



Active fault (reliable location)



Shelter-related legend



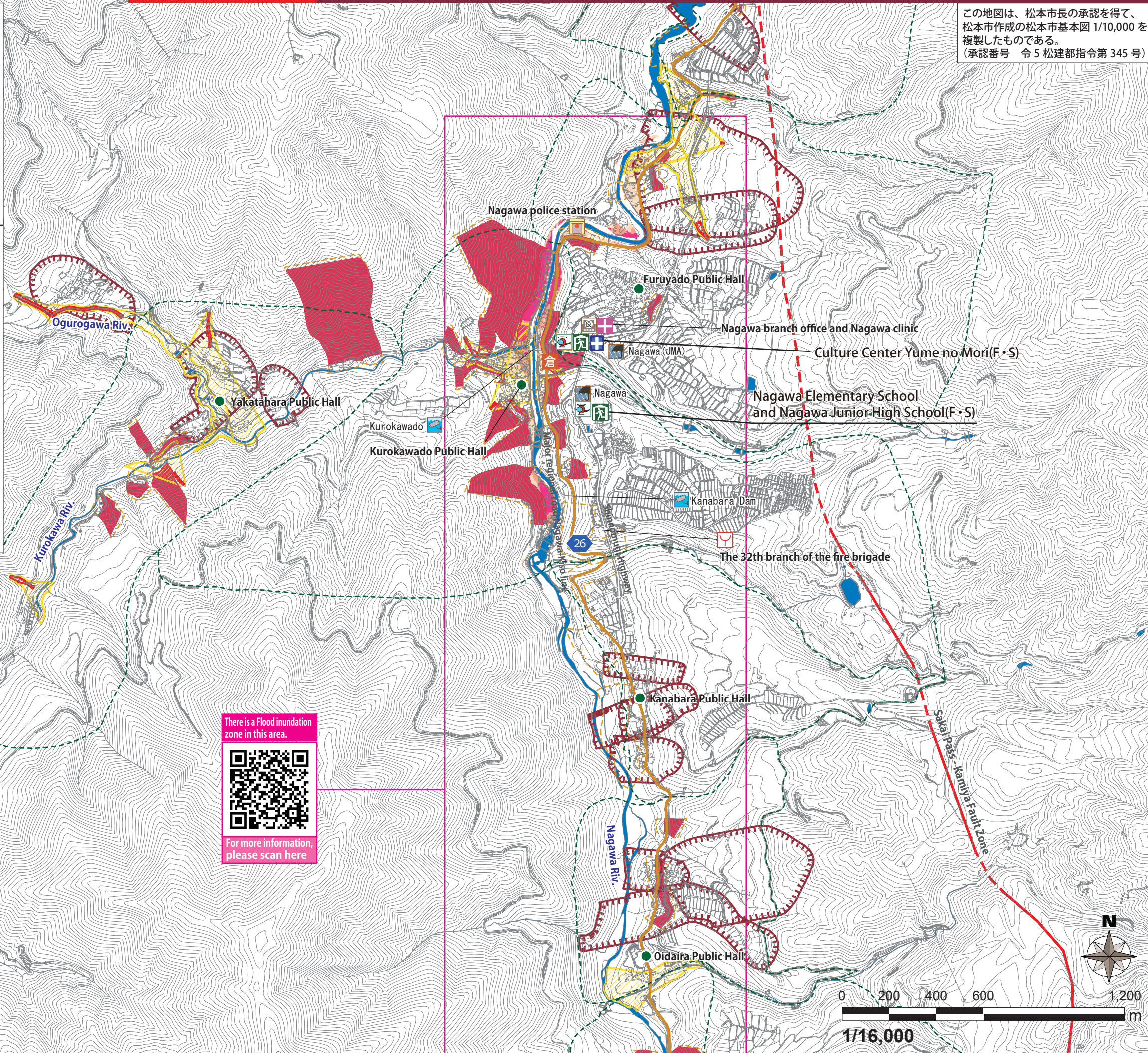
Note: Designation status is subject to change. Please check the city website for the latest information.



Community centers and meeting places

- Medical aid station
- Branch office
- Resident stations
- Fire brigade facilities
- Hospitals
- Disaster Prevention Warehouse
- Rainfall observation stations
- Water-level observatory
- River camera
- Underpasses
- Expressway
- National route
- Prefectural route
- Boundaries of town council (outline lines)

この地図は、松本市長の承認を得て、松本市作成の松本市基本図 1/10,000 を複製したものである。
(承認番号 令 5 松建都指令第 345 号)



There is a Flood inundation zone in this area.

For more information, please scan here

