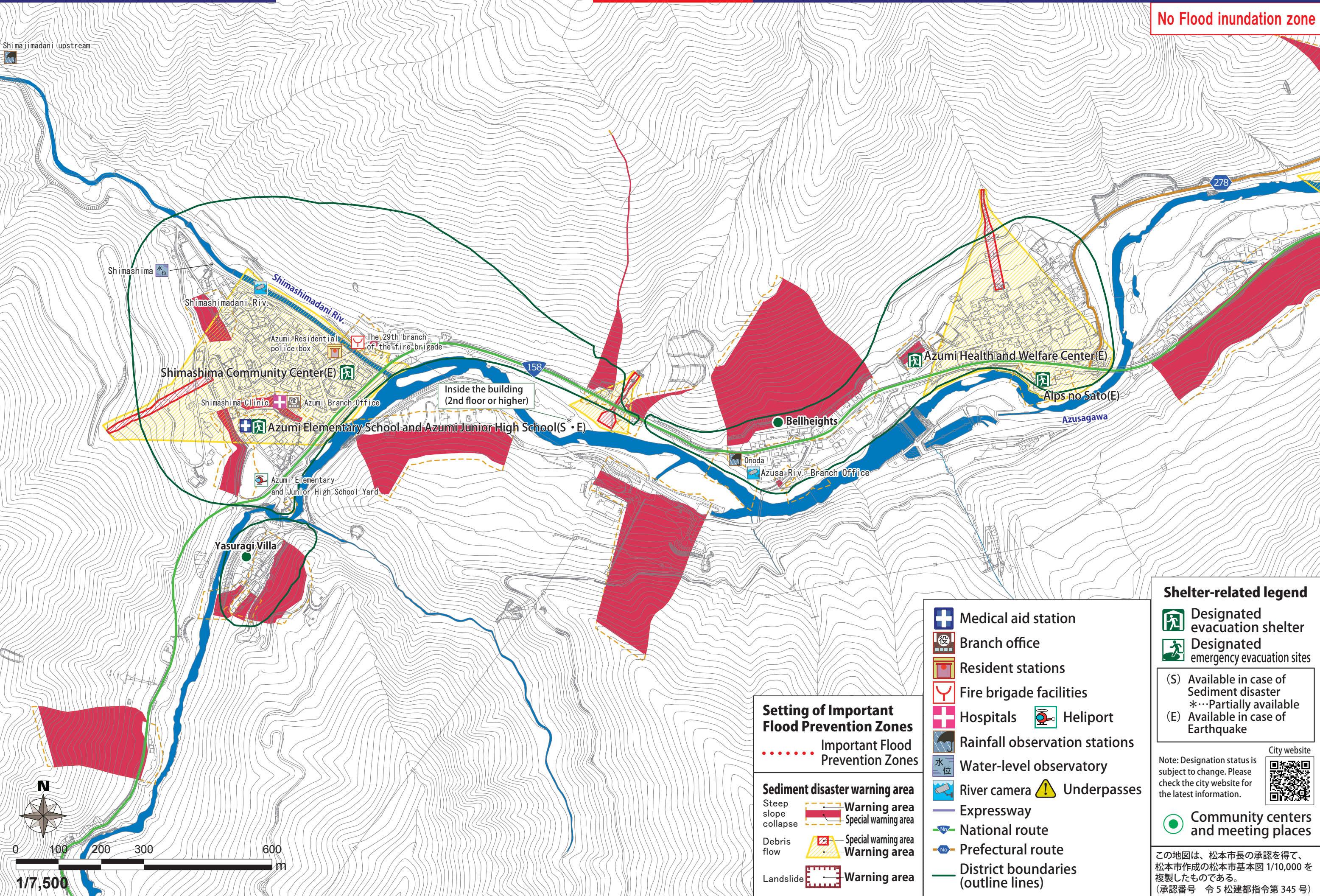


No Flood inundation zone



Setting of Important Flood Prevention Zones

..... Important Flood Prevention Zones

**Sediment disaster warning area**  
Steep slope collapse  
Debris flow  
Landslide  
Warning area  
Special warning area  
Warning area  
Warning area

**Shelter-related legend**  
Medical aid station  
Branch office  
Resident stations  
Fire brigade facilities  
Hospitals  
Rainfall observation stations  
Water-level observatory  
River camera  
Expressway  
National route  
Prefectural route  
District boundaries (outline lines)  
Community centers and meeting places  
Designated evacuation shelter  
Designated emergency evacuation sites  
(S) Available in case of Sediment disaster  
\*...Partially available  
(E) Available in case of Earthquake  
Heliport  
Underpasses

Shelter-related legend

Designated evacuation shelter  
Designated emergency evacuation sites  
(S) Available in case of Sediment disaster  
\*...Partially available  
(E) Available in case of Earthquake

Note: Designation status is subject to change. Please check the city website for the latest information.



Community centers and meeting places

この地図は、松本市長の承認を得て、松本市作成の松本市基本図 1/10,000 を複製したものである。  
(承認番号 令 5 松建都指令第 345 号)