

- Medical aid station
- Branch office
- Resident stations
- Fire brigade facilities
- Hospitals
- Heliport
- Facilities for people in need of assistance during disasters
- Rainfall observation stations
- Water-level observatory
- River camera
- Underpasses
- Expressway
- National route
- Prefectural route
- Boundaries of town council (outline lines)
- District boundaries (outline lines)

- Sediment disaster warning area**
- Steep slope collapse
 - Warning area
 - Special warning area
 - Debris flow
 - Special warning area
 - Warning area
 - Landslide
 - Warning area

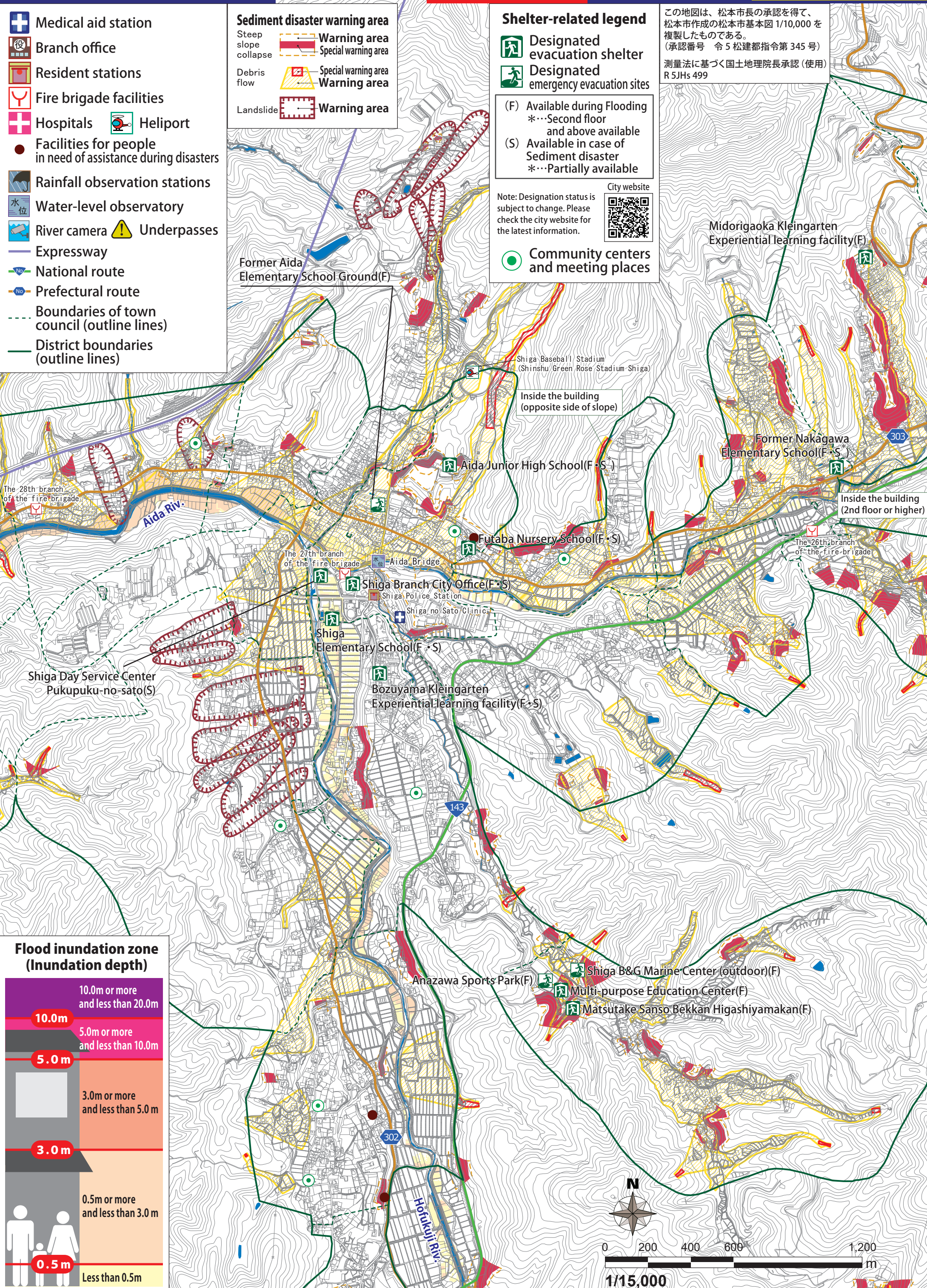
- Shelter-related legend**
- Designated evacuation shelter
 - Designated emergency evacuation sites
 - (F) Available during Flooding
 - *...Second floor and above available
 - (S) Available in case of Sediment disaster
 - *...Partially available

Note: Designation status is subject to change. Please check the city website for the latest information.

City website



この地図は、松本市長の承認を得て、松本市作成の松本市基本図 1/10,000 を複製したものである。
(承認番号 令 5 松建都指令第 345 号)
測量法に基づく国土地理院長承認 (使用) R 5JHs 499



Flood inundation zone (Inundation depth)

