

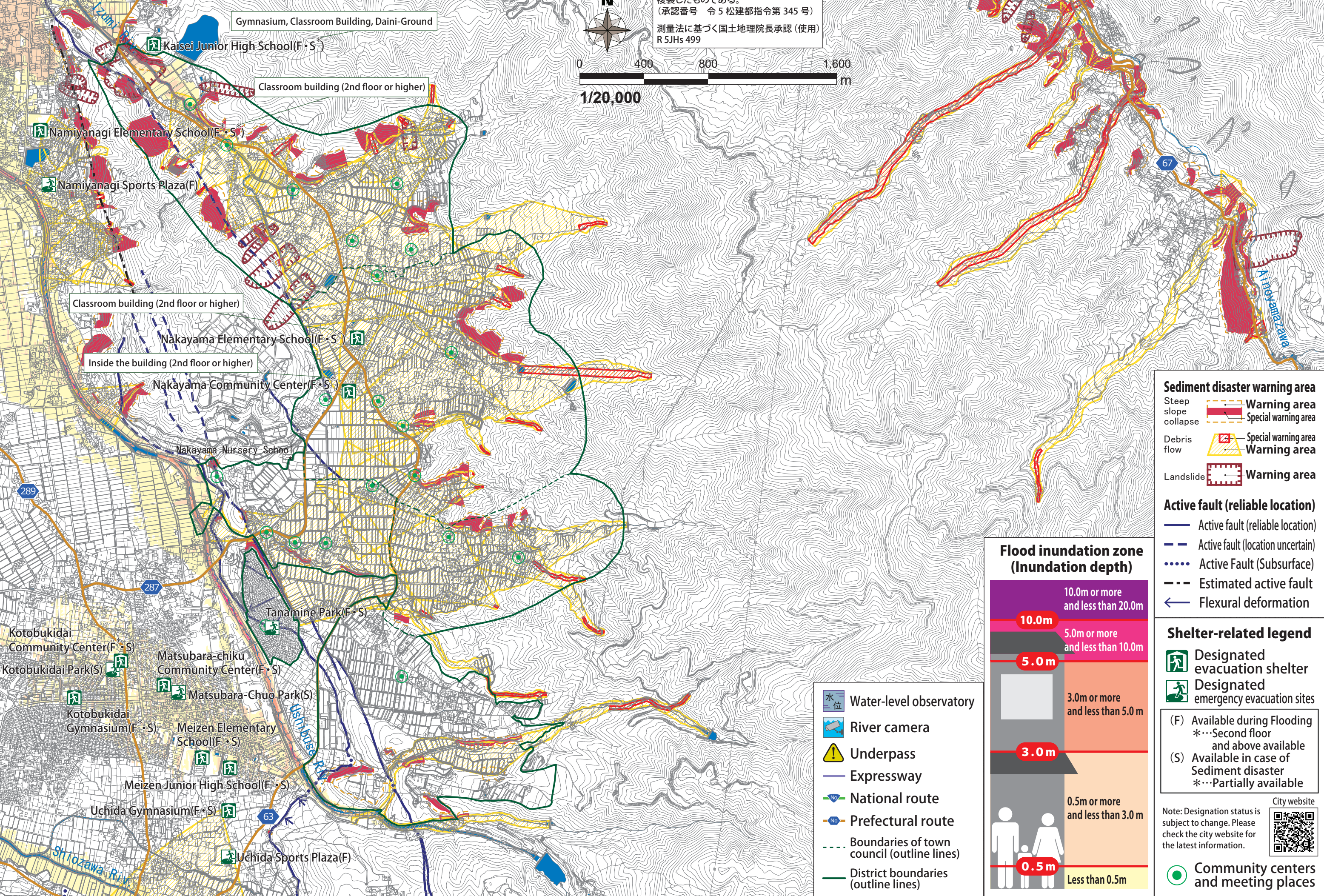
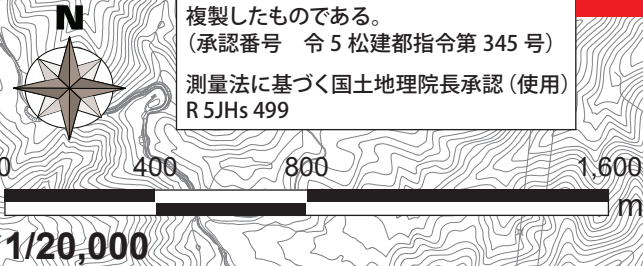
# Matsumoto City Hazard Map

Published April 2024

15 Nakayama

In the case of heavy rain that occurs once in 100 years (planned scale)

この地図は、松本市長の承認を得て、  
松本市作成の松本市基本図 1/10,000 を  
複製したものである。  
(承認番号 令5 松建都指令第 345 号)  
測量法に基づく国土地理院長承認 (使用)  
R 5JHs 499



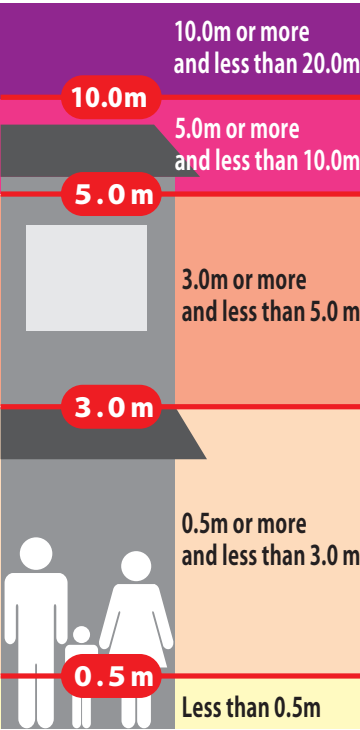
## Sediment disaster warning area

- Steep slope collapse
  - Warning area
  - Special warning area
- Debris flow
  - Special warning area
  - Warning area
- Landslide
  - Warning area

## Active fault (reliable location)

- Active fault (reliable location)
- Active fault (location uncertain)
- Active Fault (Subsurface)
- Estimated active fault
- Flexural deformation

## Flood inundation zone (Inundation depth)



## Shelter-related legend

- Designated evacuation shelter
- Designated emergency evacuation sites
- (F) Available during Flooding
  - \*...Second floor and above available
- (S) Available in case of Sediment disaster
  - \*...Partially available

Note: Designation status is subject to change. Please check the city website for the latest information.



Community centers and meeting places

- Water-level observatory
- River camera
- Underpass
- Expressway
- National route
- Prefectural route
- Boundaries of town council (outline lines)
- District boundaries (outline lines)