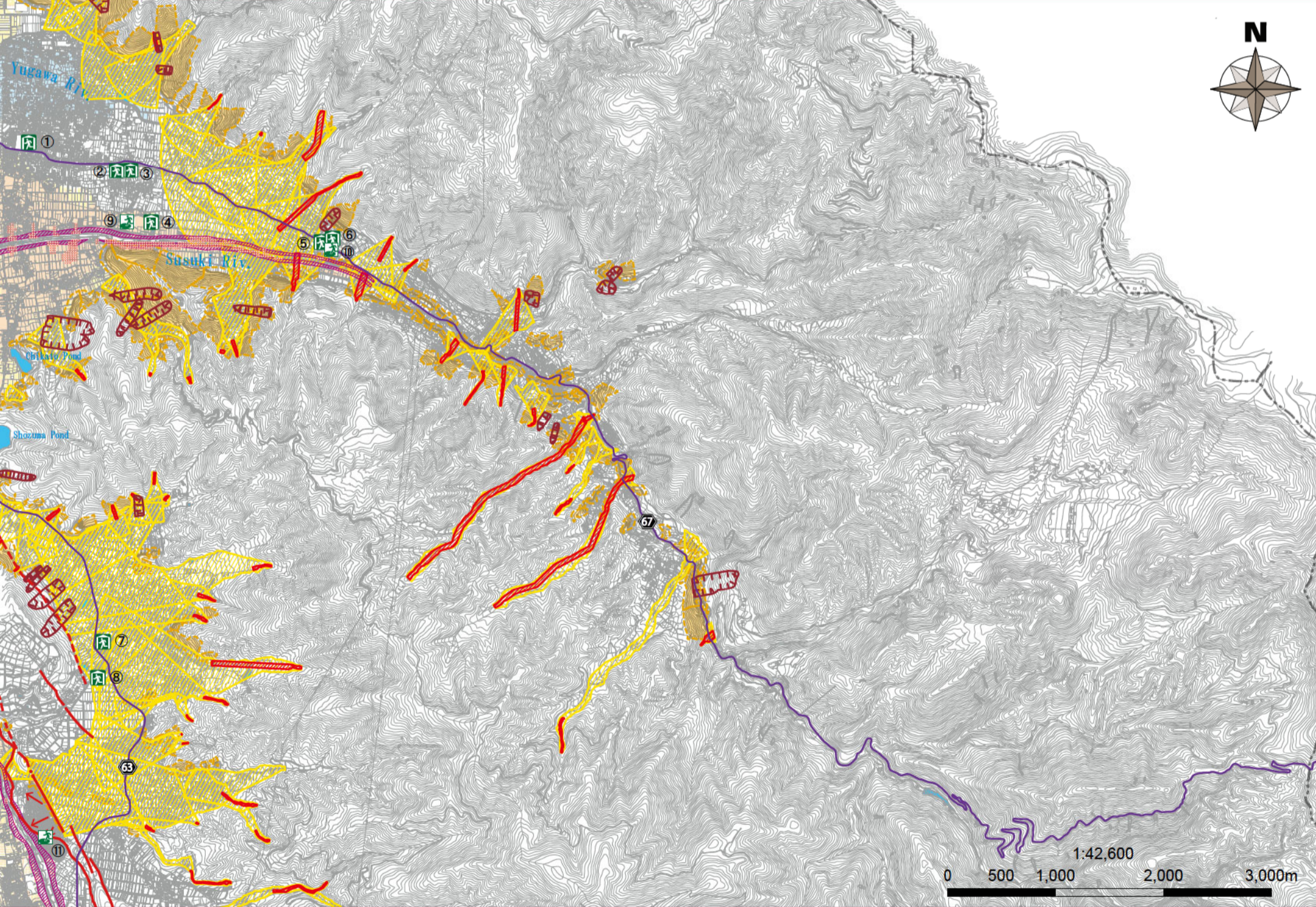


In the case of heavy rain that occurs about once in 1000 years (maximum anticipated scale)



Matsumoto city is based on an evacuation system assuming a planned scale of flood (above figure). However, depending on the rainfall situation, the city may shift to an evacuation system for an assumed maximum scale of flood (left figure), so please pay sufficient attention to the information on the hazard map.

Legend

Flood inundation zone (inundation depth)

Color	Depth Range
Dark Blue	10.0m or more
Blue	5.0m or more and less than 10.0m
Light Blue	3.0m or more and less than 5.0m
Yellow	0.5m or more and less than 3.0m
Light Yellow	Less than 0.5m

Conventional inundation assumption

Color	Depth Range
Dark Blue	5.0m or more
Blue	2.0m or more and less than 5.0m
Light Blue	1.0m or more and less than 2.0m
Yellow	0.5m or more and less than 1.0m
Light Yellow	Less than 0.5m

Sediment disaster warning area

Symbol	Warning Area
Yellow dashed line	Steep slope collapse
Red dashed line	Debris flow
Red triangle	Landslide

Designated evacuation shelter

A facility that is established when residents who have evacuated due to the risk of a disaster stay as long as necessary until the risk of a disaster disappears, or when residents who have become unable to return to their homes due to a disaster stay temporarily

Designated emergency evacuation sites

A place of refuge to escape the danger of a disaster if it occurs or is likely to occur

Expressway (thick purple line), National route (purple line with 'N'), Prefectural route (purple line with 'P'), Railway (JR) (black line with cross-ticks), Railway (Private railway) (black line with vertical ticks), Rivers and water areas (blue line), Active fault (reliable location) (red line), Active fault (location uncertain) (dashed red line), Active Fault (Subsurface) (dotted red line), Estimated active fault (dashed black line), Flexural deformation (red arrow)

List of Designated Evacuation Shelter and Designated Emergency Evacuation Sites

Name	Address	Types of disasters covered		
		Flood (rate of once in every 100 years)	Flood (rate of once in every 1000 years)	Sediment disaster
① Yamabe Junior High School	3326, Satoyamabe	○	○	○
② Matsumoto City Education and Cultural Center	2930-1, Satoyamabe	○	○	○
③ Satoyamabe Gymnasium	2920-3, Satoyamabe	○	○	○
④ Yamabe Elementary School	34, Iriyamabe	○	○	○
⑤ Iriyamabe Community Center	1509-1, Iriyamabe	○	○	○
⑥ Shoufuen	1509-1, Iriyamabe	○	○	○
⑦ Nakayama Elementary School	3517, Nakayama	○	○	× School grounds, Gymnasium ○ School building[2nd floor or higher]
⑧ Nakayama Community Center	3746-1, Nakayama	○	○	○ [2nd floor or higher]
⑨ Yamabe Sports Plaza	2836, Satoyamabe	×	×	○
⑩ Iriyamabe Sports Plaza	1489-1, Iriyamabe	○	○	○
⑪ Tanamine Park	5191-155, Nakayamadaai	○	○	○

○: Yes to evacuate ×: No to evacuate -: Open depending on the situation
 *The "designated evacuation area" in Matsumoto city also serves as the "designated emergency evacuation area".