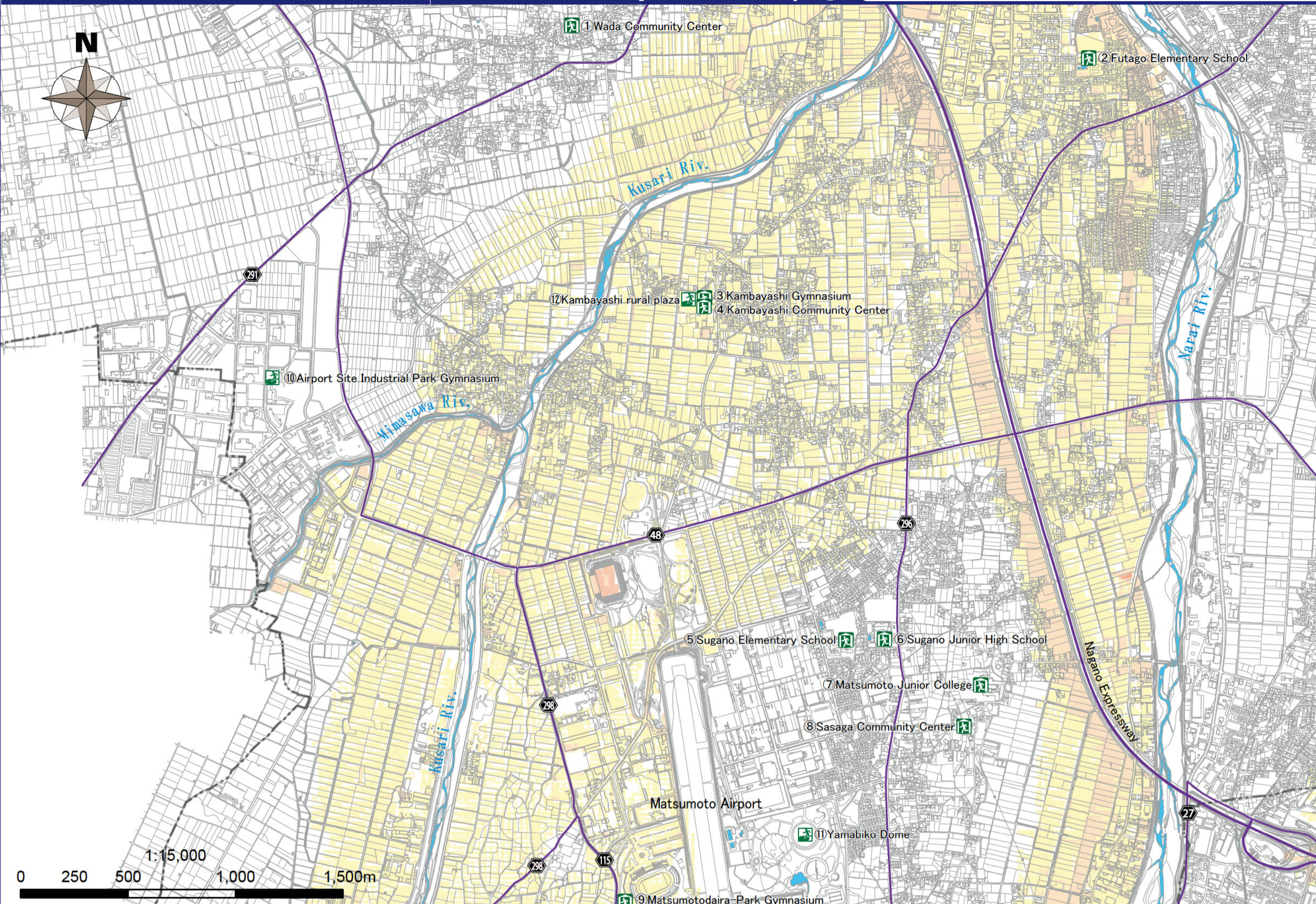


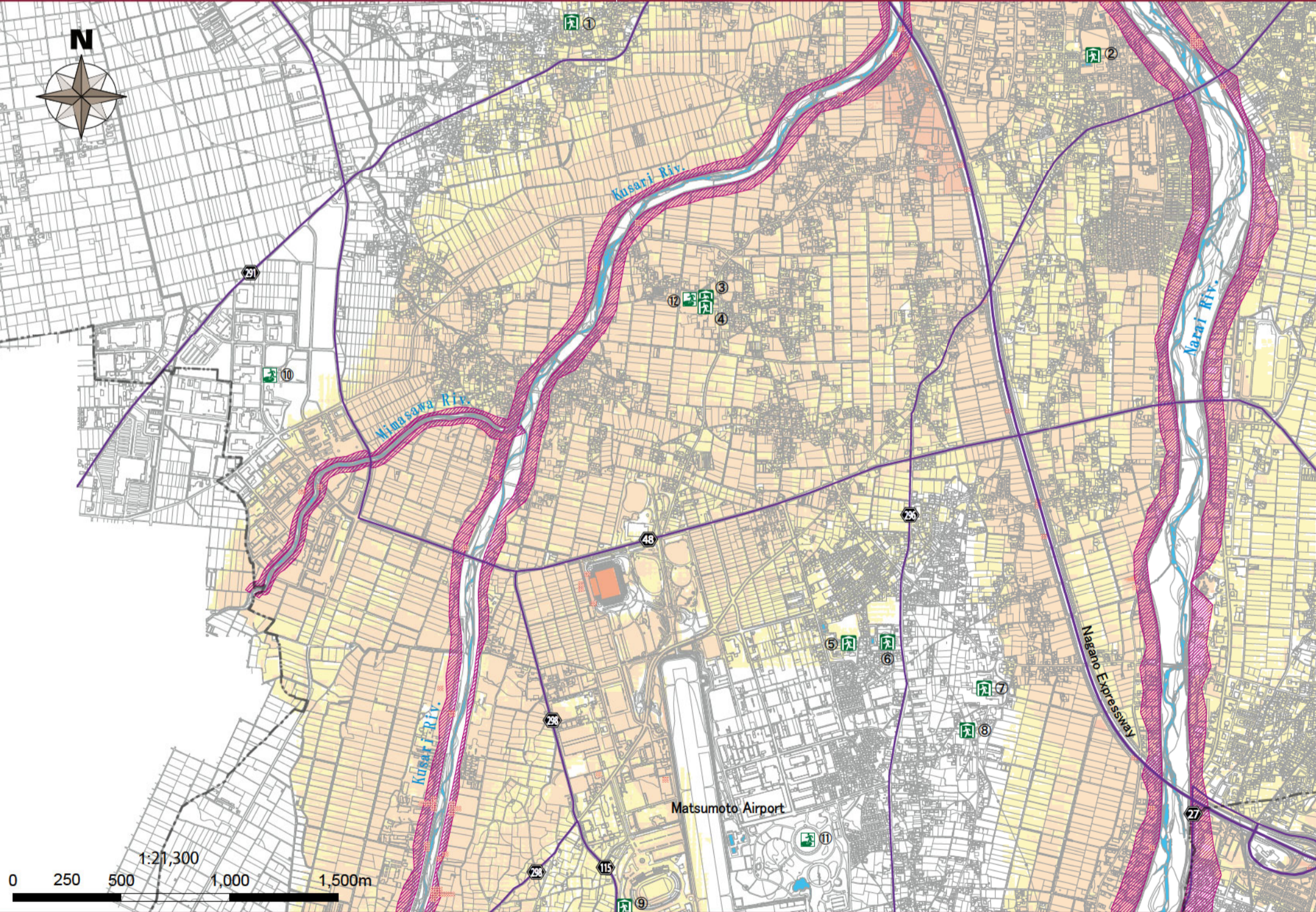
In the case of heavy rain that occurs once in 100 years (planned scale)

# Matsumoto City Hazard Map ⑦

Kamada • Wada • Kambayashi • Sasaga • Yoshikawa • Imai • Hata



In the case of heavy rain that occurs about once in 1000 years (maximum anticipated scale)



Matsumoto city is based on an evacuation system assuming a planned scale of flood (above figure). However, depending on the rainfall situation, the city may shift to an evacuation system for an assumed maximum scale of flood (left figure), so please pay sufficient attention to the information on the hazard map.

### Legend

#### Flood inundation zone (inundation depth)

**New inundation assumption**  
(Narai River, Tagawa River, Susuki River, Meatoba River, Ushibusu River, Kusari River, Mimasawa River, Kosobe River, Azusa River)

**Conventional inundation assumption**  
(Daimonzawa River, Nishi-daimonzawa River, Yugawa River, Izumi River, Shiozawa River)

10.0m or more	5.0m or more
5.0m or more and less than 10.0m	2.0m or more and less than 5.0m
3.0m or more and less than 5.0m	1.0m or more and less than 2.0m
0.5m or more and less than 3.0m	0.5m or more and less than 1.0m
Less than 0.5m	Less than 0.5m

Flooding areas such as collapsed houses (River bank erosion)

Flooding areas such as collapsed houses (Flood flow)

#### Sediment disaster warning area

**Steep slope collapse**  
Warning area  
Special warning area

**Debris flow**  
Warning area  
Special warning area

**Landslide**  
Warning area

Designated evacuation shelter  
A facility that is established when residents who have evacuated due to the risk of a disaster stay as long as necessary until the risk of a disaster disappears, or when residents who have become unable to return to their homes due to a disaster stay temporarily

Designated emergency evacuation sites  
A place of refuge to escape the danger of a disaster if it occurs or is likely to occur

Expressway   National route   Prefectural route

Railway (JR)   Railway (Private railway)   Rivers and water areas

Active fault (reliable location)   Active fault (location uncertain)

Active Fault (Subsurface)   Estimated active fault   Flexural deformation

## List of Designated Evacuation Shelter and Designated Emergency Evacuation Sites

Name	Address	Types of disasters covered			Name	Address	Types of disasters covered		
		Flood (rate of once in every 100 years)	Flood (rate of once in every 1000 years)	Sediment disaster			Flood (rate of once in every 100 years)	Flood (rate of once in every 1000 years)	Sediment disaster
① Wada Community Center	2240-31, Wada	○	○	○	⑩ Airport Site Industrial Park Gymnasium	4010-26, Wada	○	○	○
② Futago Elementary School	5921, Sasaga	○	○	○	⑪ Yamabiko Dome	9036-4, Kuko-higashi	○	○	○
③ Kambayashi Gymnasium	1558, Kambayashi	○	×	○	⑫ Kambayashi rural plaza	1558, Kambayashi	×	×	○
④ Kambayashi Community Center	1557-1, Kambayashi	○	○	○					
⑤ Sugano Elementary School	3460, Sasaga	○	○	○					
⑥ Sugano Junior High School	3475, Sasaga	○	○	○					
⑦ Matsumoto Junior College	3118, Sasaga	○	○	○					
⑧ Sasaga Community Center	2929, Sasaga	○	○	○					
⑨ Matsumotodaira-Park Gymnasium	3443, Imai	○	×	○					

○ : Yes to evacuate   × : No to evacuate   - : Open depending on the situation  
\*The "designated evacuation area" in Matsumoto city also serves as the "designated emergency evacuation area"