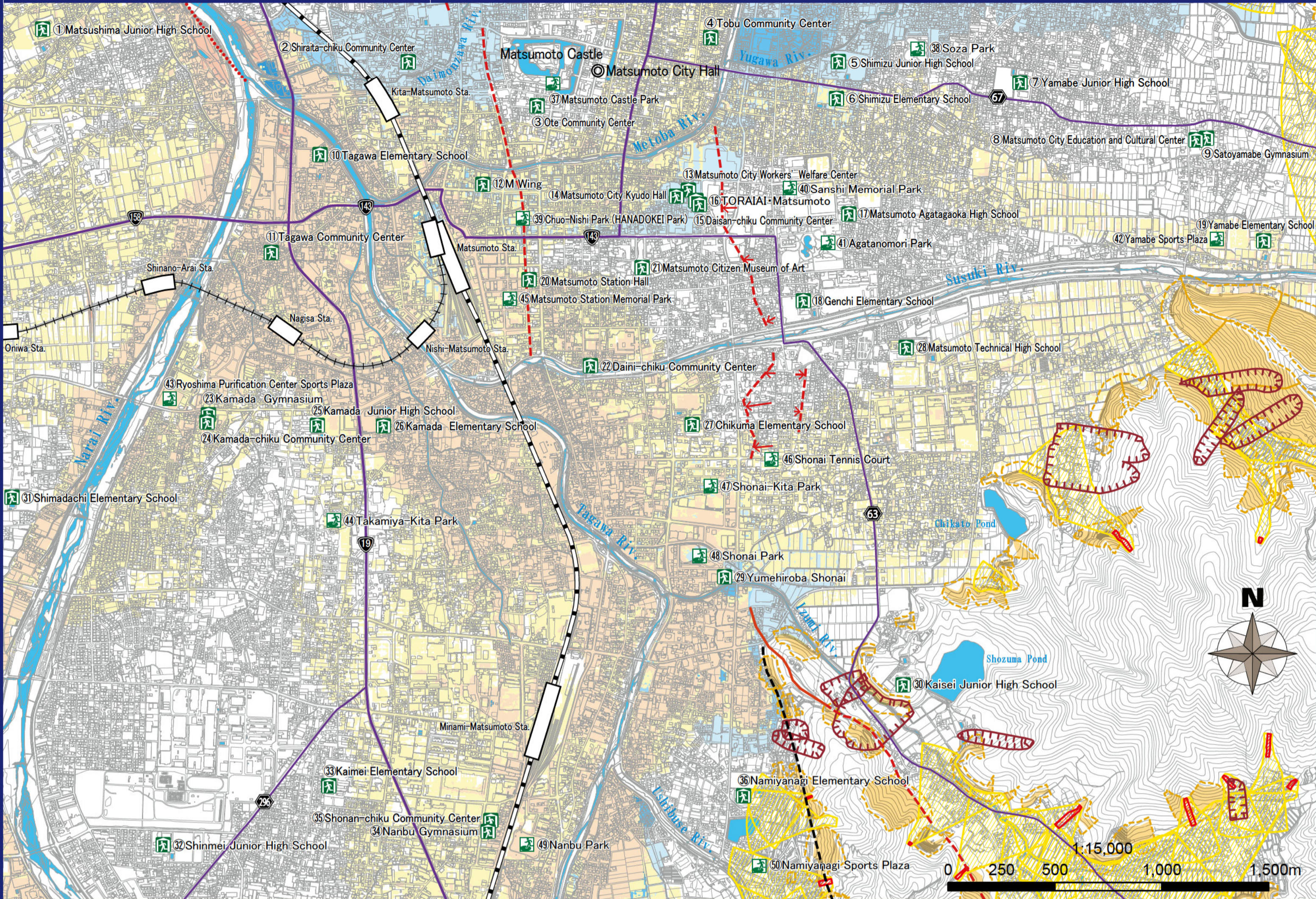


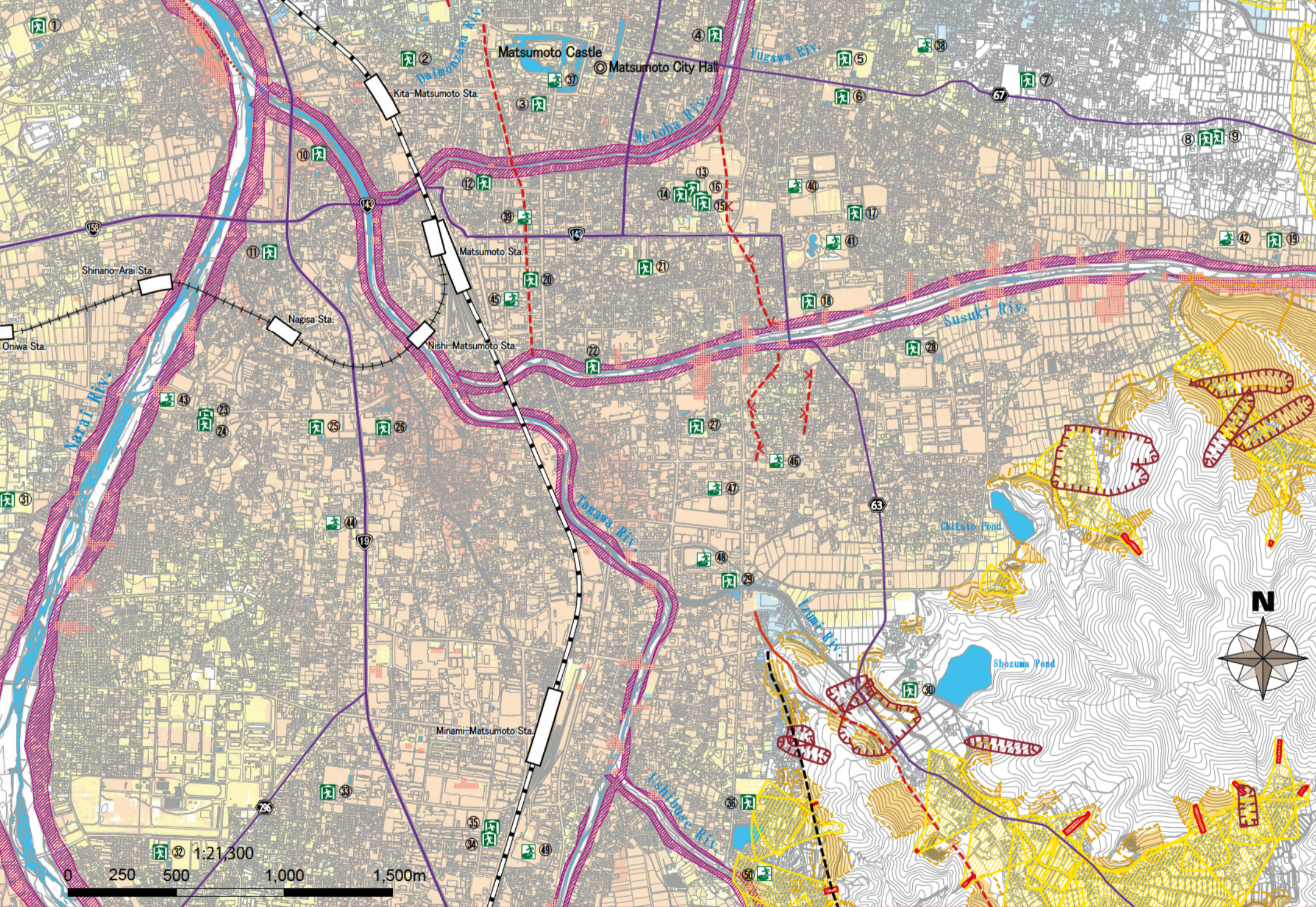
In the case of heavy rain that occurs once in 100 years (planned scale)

# Matsumoto City Hazard Map ②

Daiichi-Daini-Tobu-Chuo-Johoku-Yasuhara-Joto-Shiraita-Tagawa-Shonai-Kamada Shonan-Shimauchi-Nakayama-Shimadachi-Yoshikawa-Kotobuki-Satoyamabe-Hongo



In the case of heavy rain that occurs about once in 1000 years (maximum anticipated scale)



Matsumoto city is based on an evacuation system assuming a planned scale of flood (above figure). However, depending on the rainfall situation, the city may shift to an evacuation system for an assumed maximum scale of flood (left figure), so please pay sufficient attention to the information on the hazard map.

### Legend

#### Flood inundation zone (inundation depth)

**New inundation assumption**  
(Narai River, Tagawa River, Susuki River, Meatoba River, Ushibuse River, Kusari River, Mimasawa River, Kosobe River, Azusa River)

- 10.0m or more
- 5.0m or more and less than 10.0m
- 3.0m or more and less than 5.0m
- 0.5m or more and less than 3.0m
- Less than 0.5m

**Conventional inundation assumption**  
(Daimonzawa River, Nishi-daimonzawa River, Yugawa River, Izumi River, Shiozawa River)

- 5.0m or more
- 2.0m or more and less than 5.0m
- 1.0m or more and less than 2.0m
- 0.5m or more and less than 1.0m
- Less than 0.5m

Flooding areas such as collapsed houses (River bank erosion)

Flooding areas such as collapsed houses (Flood flow)

#### Sediment disaster warning area

Steep slope collapse  
Warning area  
Special warning area

Debris flow  
Warning area  
Special warning area

Landslide  
Warning area

Designated evacuation shelter  
A facility that is established when residents who have evacuated due to the risk of a disaster stay as long as necessary until the risk of a disaster disappears, or when residents who have become unable to return to their homes due to a disaster stay temporarily

Designated emergency evacuation sites  
A place of refuge to escape the danger of a disaster if it occurs or is likely to occur

Expressway  
 National route  
 Prefectural route  
 Railway (JR)  
 Railway (Private railway)  
 Rivers and water areas  
 Active fault (reliable location)  
 Active fault (location uncertain)  
 Active Fault (Subsurface)  
 Estimated active fault  
 Flexural deformation

## List of Designated Evacuation Shelter and Designated Emergency Evacuation Sites

○: Yes to evacuate   ×: No to evacuate   -: Open depending on the situation  
\*The "designated evacuation area" in Matsumoto city also serves as the "designated emergency evacuation area".

Types of disasters covered				Types of disasters covered				Types of disasters covered				Types of disasters covered			
Name	Flood (rate of once in every 100 years)	Flood (rate of once in every 1000 years)	Sediment disaster	Name	Flood (rate of once in every 100 years)	Flood (rate of once in every 1000 years)	Sediment disaster	Name	Flood (rate of once in every 100 years)	Flood (rate of once in every 1000 years)	Sediment disaster	Name	Flood (rate of once in every 100 years)	Flood (rate of once in every 1000 years)	Sediment disaster
① Matsushima Junior High School	○	○	○	⑮ Daisan-chiku Community Center	○	○	○	⑲ Yumehiroba Shonai	○	○	○	⑳ Matsumoto Castle Park	○	×	○
② Shiraita-chiku Community Center	○	○	○	⑯ TORAIJAI-Matsumoto	○	○	○	× Ground, Judo Kendo Hall	○	○	○	㉑ Soza Park	○	×	○
③ Ote Community Center	○	○	○	⑰ Matsumoto Agatagaoka High School	○	○	○	○ Daini-Ground, Gymnasium, School building	○	○	○	㉒ Chuo-Nishi Park (HANADOKEI Park)	×	×	○
④ Tobu Community Center	○	○	○	⑱ Genchi Elementary School	○	○	○		○	○	○	㉓ Sanshi Memorial Park	○	×	○
⑤ Shimizu Junior High School	○	○	○	⑲ Yamabe Elementary School	○	○	○		○	○	○	㉔ Agatanomori Park	○	×	○
⑥ Shimizu Elementary School	○	○	○	⑳ Matsumoto Station Hall	○	○	○		○	○	○	㉕ Yamabe Sports Plaza	×	×	○
⑦ Yamabe Junior High School	○	○	○	㉑ Matsumoto Citizen Museum of Art	○	○	○		×	×	○	㉖ Ryoshima Purification Center Sports Plaza	×	×	○
⑧ Matsumoto City Education and Cultural Center	○	○	○	㉒ Daini-chiku Community Center	○	×	○		○	○	○	㉗ Takamiya-Kita Park	×	×	○
⑨ Satoyamabe Gymnasium	○	○	○	㉓ Kamada Gymnasium	○	×	○		○	○	○	㉘ Matsumoto Station Memorial Park	×	×	○
⑩ Tagawa Elementary School	○	○	○	㉔ Kamada-chiku Community Center	○	○	○		○	○	○	㉙ Shonai Tennis Court	×	×	○
⑪ Tagawa Community Center	○	○	○	㉕ Kamada Junior High School	○	○	○		○	○	○	㉚ Shonai-Kita Park	×	×	○
⑫ M Wing	○	○	○	㉖ Kamada Elementary School	○	○	○		○	○	○	㉛ Shonai Park	×	×	○
⑬ Matsumoto City Workers' Welfare Center	○	○	○	㉗ Chikuma Elementary School	○	○	○		○	○	○	㉜ Nanbu Park	×	×	○
⑭ Matsumoto City Kyudo Hall	○	○	○	㉘ Matsumoto Technical High School	○	○	○		○	○	○	㉝ Nanbu Park	×	×	○
												㉞ Namiyanagi Sports Plaza	○	○	×